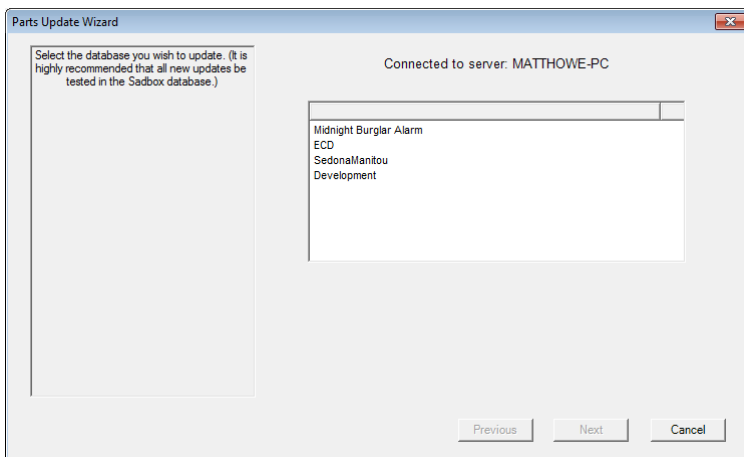


The latest version of the Parts Updater (9.0.0.0) for SedonaOffice 2.13 or later, has been improved. The major changes are:

- All windows have been adjusted to have a cleaner, less cluttered look.
- The separate setup windows have been combined into a new wizard style window.
- The proportions of the mapping window have been changed to allow use on smaller screens such as laptop computers.
- Bar Coding integration has been repaired and is now fully functional.
- All saved mapping files still work with the new Parts Updater.

New Wizard:



New Mapping window:

